



**PORTABLE PLATFORM
SCALES
Digital Type
Series 850F
Owner's Manual**

CARDINAL SCALE MFG. CO.
PO BOX 151, WEBB CITY, MO 64870
417-673-4631
www.cardinalscale.com

0066-M176-O1 Rev H
10/06

Printed in USA

Thank you for purchasing our Detecto Model 850F Series Portable Digital Scale. It has been manufactured with Detecto quality and reliability at our factory in Webb City, Missouri U.S.A. This scale has been calibrated and tested before leaving our factory to insure accuracy and dependability for years to come.

When removing the scale from its packing, inspect it for signs of damage such as exterior dents and scratches. Keep carton and packing material for return shipment if it should become necessary. It is the responsibility of the purchaser to file all claims for any damages or loss incurred during transit, unless this responsibility has been accepted by the Seller in its proposal.

Table of Contents

Introduction 1

Base and Column Assembly Instructions

885xF Scale Base, Column Assembly Diagram and Instructions 2

585XF Diagram, Digital Weight Indicator Instructions and Parts List 3

5852F-758 Diagram, Digital Weight Indicator Instructions and Parts List 4

Scale Base, Parts Diagram and List 5

Column Assembly Parts Diagram and List 6

To Order Parts Call Toll Free: 1-800-641-2045

NOTICE

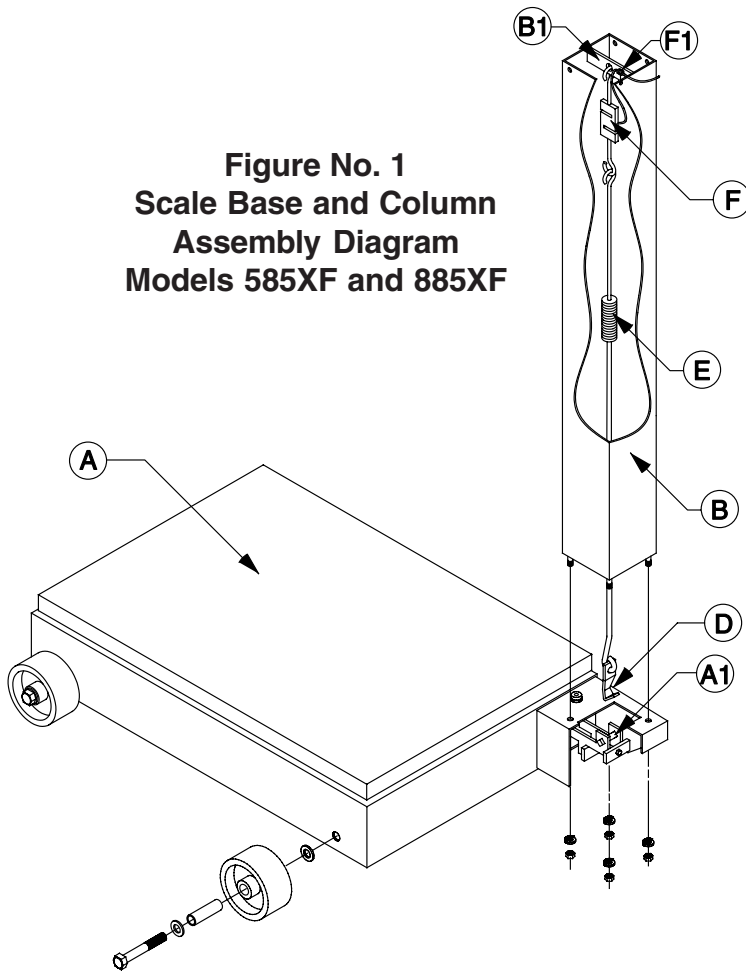
All rights reserved. Reproduction or use without written, expressed permission, of editorial or pictorial content, in any manner, is prohibited. No patent liability is assumed with respect to the use of the information contained herein. While every precaution has been taken in the preparation of this book, the Seller assumes no responsibility for errors or omissions. Neither is any liability assumed for damages resulting from the use of the information contained herein. All instructions and diagrams have been checked for accuracy and ease of application, however, success and safety in working with tools depend a great extent upon the individual accuracy, skill and caution. For this reason, the Seller is not able to guarantee the result of any procedure contained herein. Nor can they assume responsibility for any damage to property or injury to persons occasioned from the procedures. Persons engaging the procedures do so entirely at their own risk.

885XF

SCALE BASE AND COLUMN ASSEMBLY INSTRUCTIONS

Refer to Figure No.1 and follow the instructions provided below for scale assembly.

Figure No. 1
Scale Base and Column
Assembly Diagram
Models 585XF and 885XF

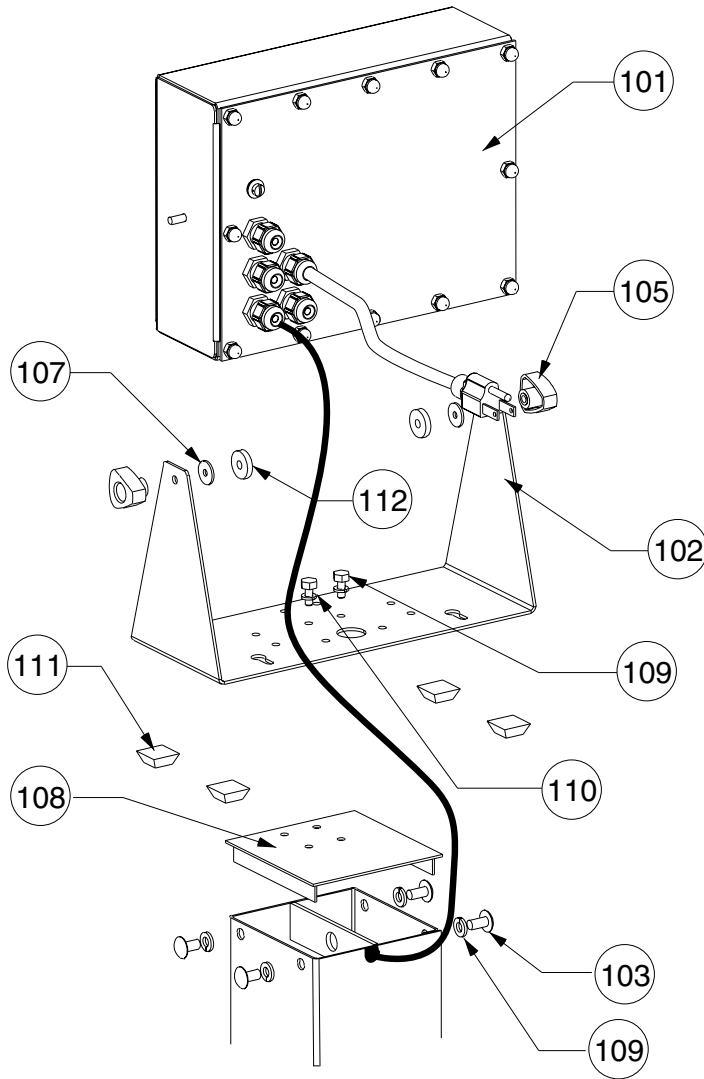


1. Assemble each wheel to the scale base with four 5/8-11 x 3 1/2" hex head bolts, four sleeves and eight 5/8 flat washers. To secure the wheel, tighten the bolt against the sleeve to scale base.
2. Insert column (B) into scale base assembly (A) and secure the with 3/8 split lock washers and 3/8-16 hex nuts. NOTE: Detecto decal should be facing toward platform.
3. Attach the steelyard hanger (D) to the long end of the shock absorber assembly (E).
4. Partially lower the shock absorber assembly (E) into the column (B) with the open side of the hanger (D) facing towards the back of the scale.
5. Hook the short end of the shock absorber assembly (E) to one end of the load cell assembly (F). NOTE: Handle load cell with care!! DO NOT drop, bend or twist.
6. Slide the grommet (F1) away from the load cell to the other end of the cable.
7. Slide the grommet (F1) into the slot at the top of the column. NOTE: The slot should be on the back side of the column.
8. Lower the load cell and shock absorber assemblies into the column. The hanger (D) must drop through the opening in the scale base assembly.

9. Fasten the top hook bolt of the load cell assembly (F) to the column hanger (B1).
10. Attach the steelyard hanger (D) to the nose iron pivot (A1).
11. Pull out the excess load cell cable in the column leaving enough slack in the cable so as not to have any side pull on the load cell.
12. Before continuing to Step 13, check scale platform for ease of movement. If rubbing or binding, check to make sure the scale has been correctly assembled. If it has been properly assembled, DO NOT attempt to adjust the long lever nose iron (A1), contact your Detecto dealer. The nose iron has been preset at the factory. Note: Scale set up and operation must be on a level surface. The scale is level when the air bubble is in the target on the bulls-eye level.
13. Scale base and column assembly is complete. Refer to the Digital Indicator Instructions which apply to your model of scale for further assembly instructions. Or refer to the information below for load cell wiring identification of the 850F Model.

Color	Function
Green	+Exc
Black	-Exc
Red	+Sig
White	-Sig
Shield	Shield

585XF Digital Weight Indicator Assembly Instructions



**Figure No. 2
Assembly Parts Diagram
Model 585XF**

1. Assemble column top plate assembly (108) to column using four 1/4-20 x 1/2" truss head screws and four 1/4 split lock washers (103, 104). Assemble gimbal to column top plate assembly using two #10-32 x 1/2" hex head screws and two #10 split lock washers (109, 110).

2. Mount the digital weight indicator (101) to the gimbal (102) and secure with two knobs and two washers (105, 107). NOTE: Do not tighten these knobs tight. The indicator should be free to be adjusted later at the operator's convenience.

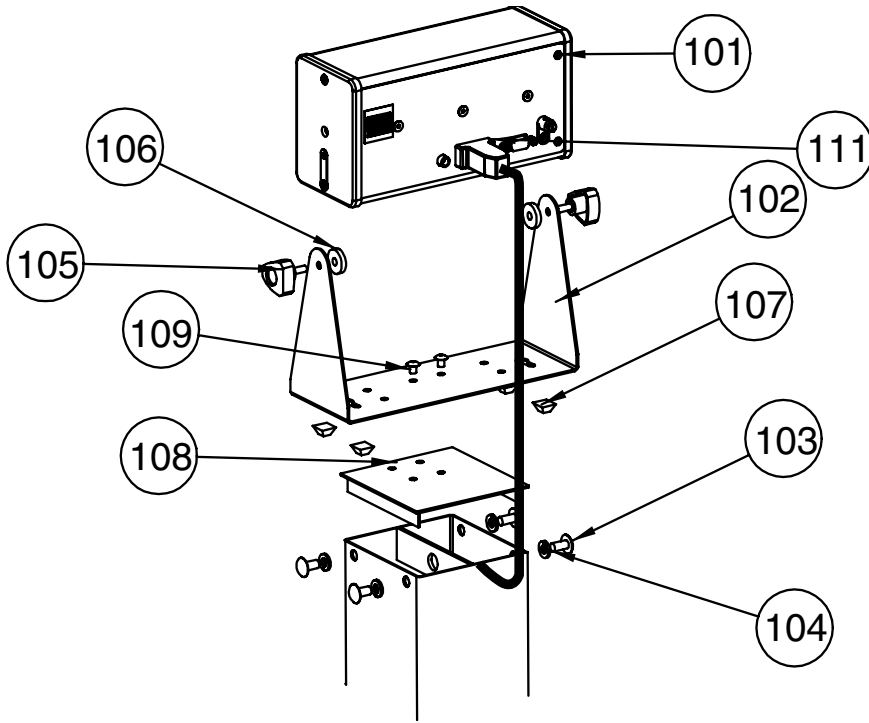
3. Connect and secure the load cell cable into the back of the indicator via the 9 pin connector. Refer to Indicator Manual 8200-M024-O1.

4. Refer to Indicator Manual 8200-M024-O1 for setup instructions.

Parts List

Item No.	Part No.	Part Name	Quantity
101	205/210	Digital Weight Indicator	1
102	8200-D022-08	Gimbal	1
103	6021-1423	1/4-20 x 1/2" Truss Head Screw	4
104	6024-0039	1/4 Split Lock Washer	4
105	6540-1053	Enclosure Knob	2
107	6024-0083	Washer	2
108	430GR8630	Top Plate Assembly	1
109	6021-1002	Hex Head Screw #10-32 x 1/2"	2
110	6024-0037	#10 Lock Washer	2
111	6540-1004	Rubber Feet	4
112	6540-1008	Spacer	2

585XF-758 Digital Weight Indicator Assembly Instructions



**Figure No. 3
Assembly Parts Diagram
Model 585XF-758**

1. Assemble column top plate assembly (108) to column using four 1/4-20 x 1/2" truss head screws and four 1/4 split lock washers (103, 104). Assemble gimbal to column top plate assembly using two #10-32 x 1/2" hex head screws and two #10 split lock washers (109, 110).

2. Mount the digital weight indicator (101) to the gimbal (102) and secure with two knobs and two washers (105, 107). NOTE: Do not tighten these knobs tight. The indicator should be free to be adjusted later at the operator's convenience.

3. Connect and secure the load cell cable into the back of the indicator via the 9 pin connector. Refer to Indicator Manual 8555-M021-O1.

4. Refer to Indicator Manual 8555-M021-O1 for setup instructions.

Parts List

Item No.	Part No.	Part Name	Quantity
101	758	Digital Weight Indicator	1
102	8555-C146-08	Gimbal	1
103	6021-1423	1/4-20 x 1/2" Truss Head Screw	4
104	6024-0039	1/4 Split Lock Washer	4
105	6540-1052	Enclosure Knob	2
106	6680-1008	Spacer	2
107	6540-0001	Rubber Feet	4
108	430GR8630	Top Plate Assembly	1
109	6021-1002	Hex Head Screw #10-32 x 1/2"	2
110	6024-0037	#10 Lock Washer	2
111	1930-B428-0A	Indicator Cable	1

BASE ASSEMBLY

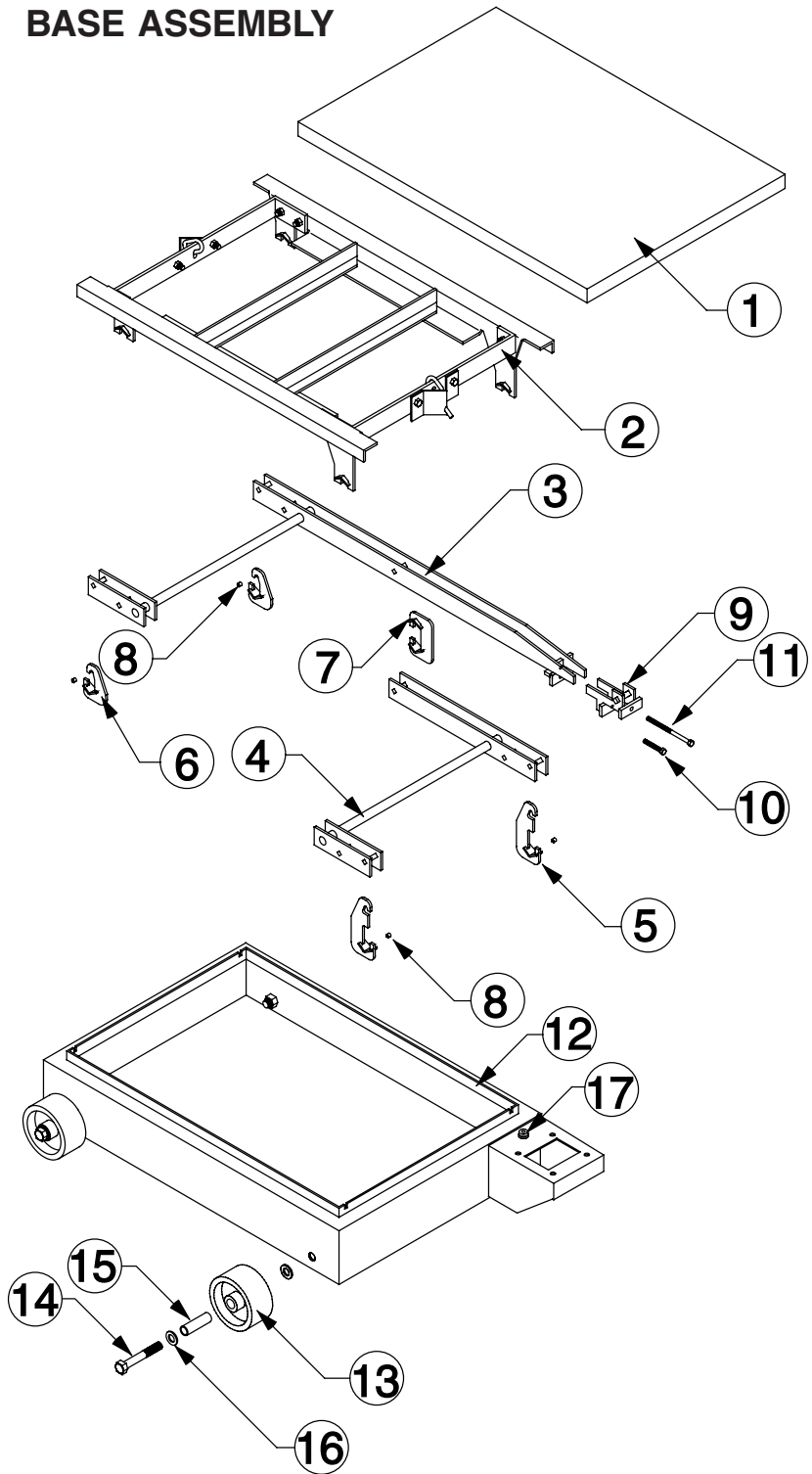
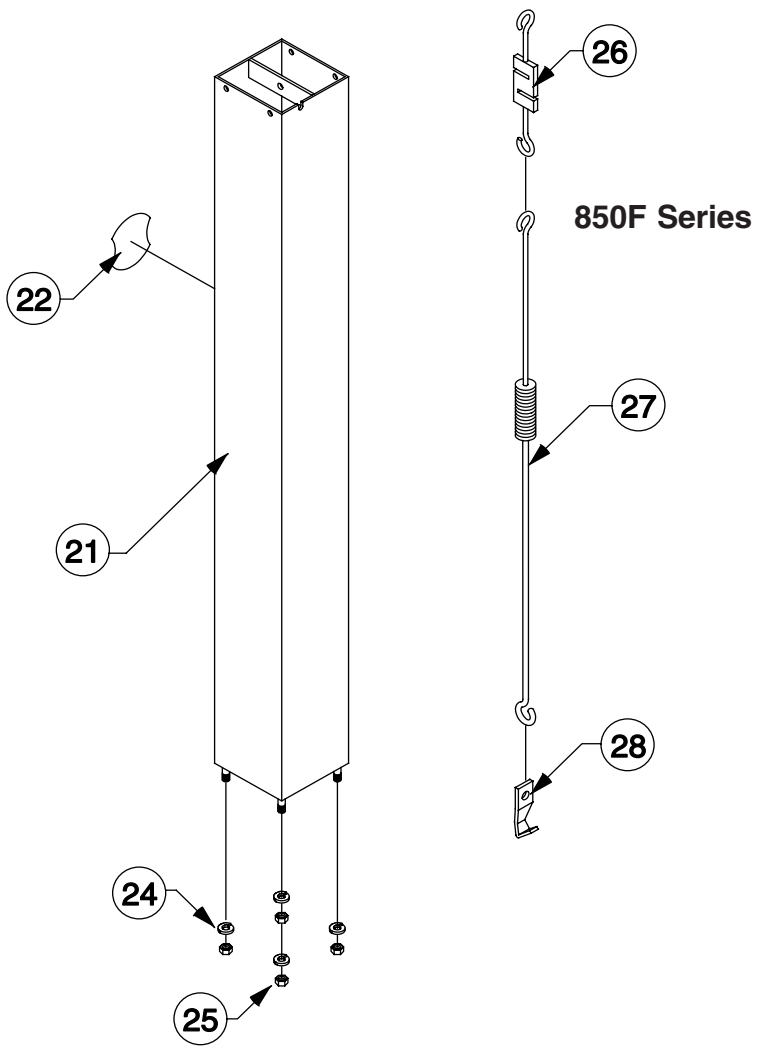


Figure No. 4
Scale Base and Parts
Diagram
Models 585XF and
885XF

Parts List

Item No.	585XF and 885XF Series Part No.	Part Name	Quantity
1	0066-C017-08	Deck Plate	1
2	0066-D012-0A	Weighbridge Assembly	1
3	0066-D006-0A	Long Lever Assembly	1
4	0066-D007-0A	Short Lever Assembly	1
5	0066-B004-0A	Long Hanger Assembly	2
6	0066-B005-0A	Short Hanger Assembly	2
7	0066-B008-0A	Center Hanger Assembly	1
8	0066-B003-08	Bearing	4
9	0066-B010-0A	Nose Iron Assembly	1
10	6021-1458	5/16 -18UNC x 1 3/4" Hex head Bolt	1
11	6021-1833	5/16 -18UNC x 4" Hex head Bolt	1
12	0066-D002-0A	Base Weldment	1
13	0066-B199-08	5" Rubber Wheel	4
14	6007-0240	5/8 -11 x 3 1/2" Hex head Bolt	4
15	0066-B200-0A	Sleeve	4
16	6024-0015	5/8 Flat Washer	8
17	6690-0001	Bulls-eye Level	1

COLUMN ASSEMBLY



**Figure No. 5
Column Assembly
Parts Diagram**

Parts List

Item No.	Part No.	Part Name	Quantity	Model No.
21	0066-B100-0A	Column Assembly	1	
22	6PSS1002	Detecto Logo Decal	1	
24	6024-0045	3/8 Split Lock Washer	4	
25	6P23	3/8-16 Hex Jam Nut	4	
26*	709G2R1206	Load Cell Assembly	1	5852F-758
	709G2R1215	Load Cell Assembly	1	5852F, 8852F
27*	568GR404	Shock Absorber	1	
28	6P32	Hanger	1	

*85XF Series

STATEMENT OF LIMITED WARRANTY

Detecto Scale warrants its equipment to be free from defects in material and workmanship as follows: Detecto warrants to the original purchaser only that it will repair or replace any part of equipment which is defective in material or workmanship for a period of one **(1) year** from date of shipment. Detecto shall be the sole judge of what constitutes a defect.

During the **first ninety (90) days** Detecto may choose to supply all necessary replacement parts and service during normal weekday working hours at no charge to the buyer.

After the first ninety (90) days Detecto will supply parts and service at the job site provided the owner agrees to pay the Dealer for all travel time, including mileage and test equipment, as well as any expenses incurred over the direct labor of the technician at the job site. This limited warranty honors only labor performed by Detecto authorized dealers.

This warranty does not apply to peripheral equipment not manufactured by Detecto; this equipment will be covered by certain manufacturer's warranty only.

This warranty does not include replacement of expendable or consumable parts. This does not apply to any item which has deteriorated or damaged due to wear, accident, misuse, abuse, improper line voltage, overloading, theft, lightning, fire, water or acts of God, or due to extended storage or exposure while in purchaser's possession. This warranty does not apply to maintenance service. Purchased parts will have a ninety (90) day repair or replacement warranty only.

Detecto may require components be returned to the factory; they must be properly packed and shipping charges prepaid. A return authorization number must be obtained for all returns and marked on the outside of all returned packages. Detecto accepts no responsibility for loss or damage in transit.

STATEMENT OF LIMITED WARRANTY

Conditions Which Void Limited Warranty

This warranty shall not apply to equipment which:

- A.) Has been tampered with, defaced, mishandled or have had repairs and modifications not authorized by Detecto.
- B.) Has had serial number altered, defaced, or removed.
- C.) Has not been grounded according to Detecto's recommended procedure.

Freight Carrier Damage

Claims for equipment damaged in transit must be referred to the freight carrier in accordance with freight carrier regulations.

This warranty sets forth the extent of our liability for breach of any warranty or deficiency in connection with the sale or use of the product. Detecto will not be liable for consequential damages of any nature, including but not limited to, loss of profit, delays or expenses, whether based on tort or contract. Detecto reserves the right to incorporate improvements in material and design without notice and is not obligated to incorporate improvements in equipment previously manufactured.

The foregoing is in lieu of all other warranties, express or implied including any warranty that extends beyond the description of the product including any warranty of merchantability or fitness for a particular purpose. This warranty covers only those Detecto products installed in the forty-eight (48) contiguous continental United States.



Ph. (800) 641-2008
E-mail: detecto@cardet.com
203 E. Daugherty
Webb City, MO 64870

02/06
Printed in USA
D268-WARRANTY-DET

