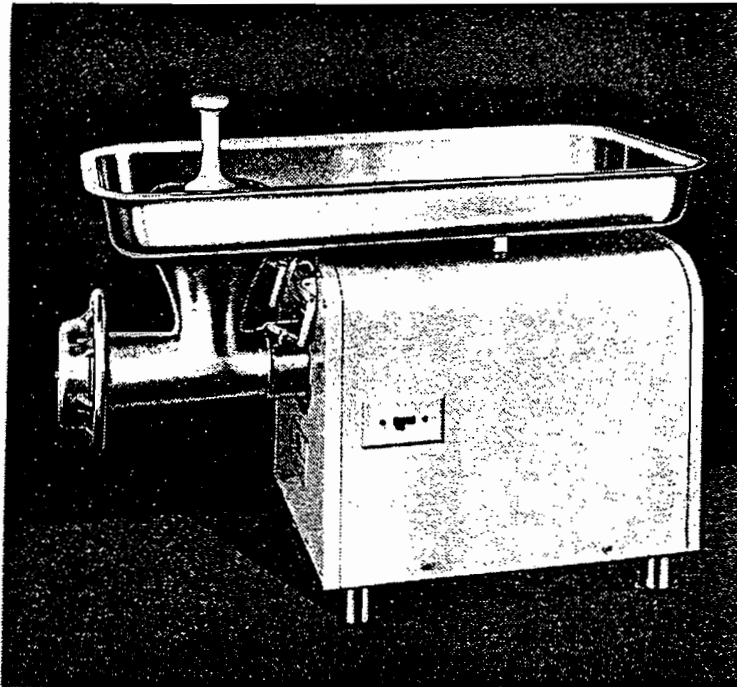


INSTRUCTION MANUAL

. . . with Catalog of Replacement Parts



HOBART

MODEL 4532 CHOPPER

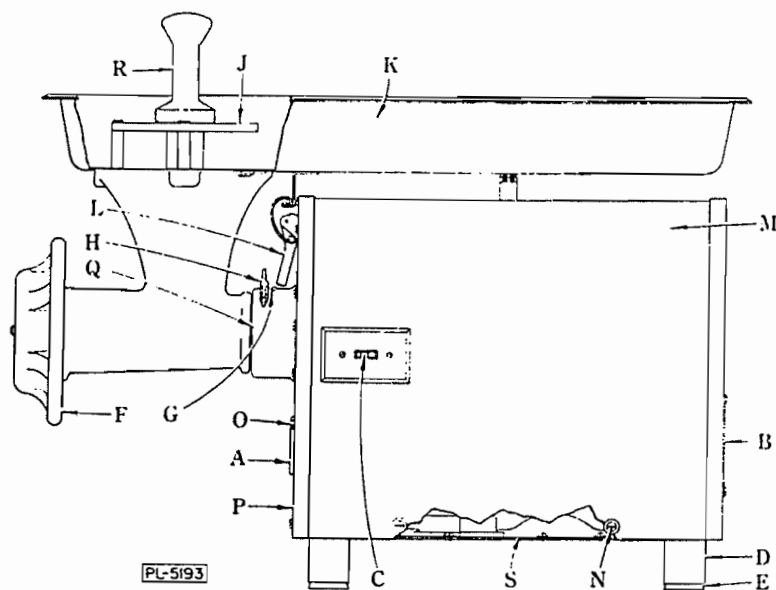
M/L #7993 (SST)

M/L #7992 (PAINTED)

HOBART.

*The World's Oldest and Largest Manufacturer of Computing Scales
and Food Store, Kitchen, Bakery and Dishwashing Machines*

THE HOBART MANUFACTURING COMPANY **TROY, OHIO**



Instructions for Operation and Care of Model 4532 CHOPPER

INSTALLATION:

Before making electrical connections, CHECK THE SPECIFICATIONS ON THE NAME PLATE (A) TO MAKE SURE THEY AGREE WITH THOSE OF YOUR ELECTRICAL SERVICE.

Electrical connections should be made by qualified workmen who will observe all applicable Safety Codes and the National Electrical Code.

Remove the connection cover (B) and connect the line conductors directly to the switch (C). A (7/8" dia.) hole below this connection cover is provided for the use of either flexible or rigid conduit for a permanent installation. It is IMPORTANT to use the proper conductor (wire) and fuse sizes. These are listed below and also on the tag attached to the machine.

WIRE AND FUSE SIZES

Volts	Phase	Line Fuse	Wire Size
208	1	40	12
230	1	30	14
208	3	20	14
220	3	20	14
440	3	15	14
550	3	15	14

Multiphase motors should be so connected that the attachment drive runs counterclockwise facing the attachment hub.

The switch is regularly located on the right side of the machine as shown. This switch may be moved to the left side by removing a cover plate and interchanging with the switch.

The four leg assemblies (D) are removed, packed in a carton and shipped with the machine. Re-assemble these legs and tighten firmly by hand. The rubber feet (E) on these legs cushion the machine. Under normal operation, the machine need not be bolted down.

CARE OF CHOPPER ATTACHMENT:

Before using the chopper attachment, take it apart and wash all parts thoroughly. When re-assembling, apply tasteless oil to the drive shaft and special bronze thrust washer of the worm. The knife and plate need preliminary lubrication; rub tallow over the

cutting faces of these parts. When assembling the knife, be sure to turn the cutting side out toward the perforated plate. See that the notches on the circumference of the plate fit over the pins in the cylinder.

Do not adjust the adjusting ring (F) too tight; if the knife and plate are both sharp, only a moderate pressure will be needed. Knives and plates must be sharp and true for proper cutting action. Rub a little tallow over newly-sharpened plates before use.

Keep the attachment in a clean and sanitary condition. If the machine is to be out of service for any length of time, take the attachment apart, wash and dry all parts. Lubricate as previously described.

INSERTING CHOPPER ATTACHMENT:

When assembling the chopper attachment, see that both the hub and socket are clean; insert with a slight twisting motion toward the left so that the stop pin in the attachment is in contact with the side of the hole that receives it. Tighten the thumbscrew (H).

To remove the attachment, loosen the thumbscrew (H) and give the attachment a twist to the right as you pull it out. Never strike the cylinder with an object to loosen it.

The FS type chopper attachment shown in the illustration has a permanently attached safety guard (J). The feed pan (K) is held in place by the spring clamps (L) which provide a quick release for easy removal of the pan.

MEAT CHOPPING:

First, cut the meat into strips or chunks of a size that will pass under the guard, and pile it up in the feed pan. **CAUTION: KEEP HANDS FROM UNDER GUARD AT ALL TIMES WHILE THE MACHINE IS OPERATING! USE STOMPER.**

When feeding the chopper, push meat under guard into the hopper, using the stomper only to dislodge pieces. This is the quickest method of feeding, for both hands can be used. Feed regularly but do not try

to force excessive quantities with the stomper; nothing is gained by so doing.

When running meat through the chopper a second time, more speed is attained by feeding small quantities at a time, than by trying to force large amounts with the stomper.

The fineness to which the product is cut depends upon the size of the holes in the chopper plate that is used, not upon the tension given the adjusting ring (F). If both the knife and plate are kept sharp a very moderate tension will suffice.

REMOVING HOUSING:

To remove the housing (M), dis-assemble the switch plate and switch (C). Take out the six screws (N) from the housing sides and outlet (B) end. Next remove the eleven screws (O) from the front sheet (P). Lift off the housing. If the attachment trim cap (Q) is to be removed, care should be taken to prevent losing the ball from the oiler (G).

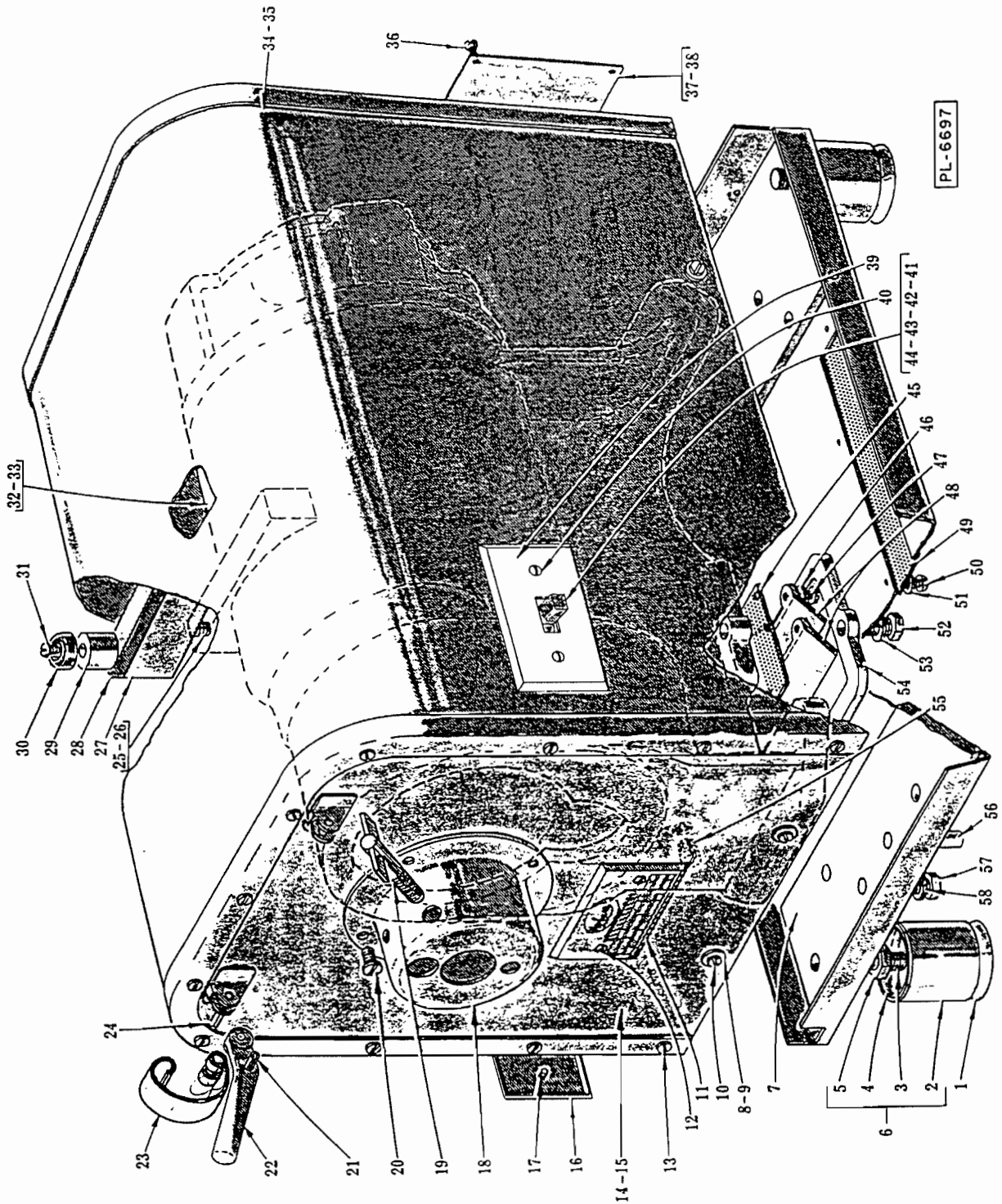
AIR INTAKE:

Under normal operating conditions the motor air intake screen (S) (located in the base of the chopper) will need little or no attention. However, in some installations where saw dust or other foreign materials are present in the air, this intake screen may become partially or completely covered and throttle the cooling air to the motor. Where an adverse dust condition does exist, periodically check the screen (using an adequate light) and wipe exposed side of screen clean with a rag or brush as required.

LUBRICATION:

The gears and bearings are packed with special lubricant sufficient to last for several years. Consult a Hobart service technician before adding or changing lubricant.

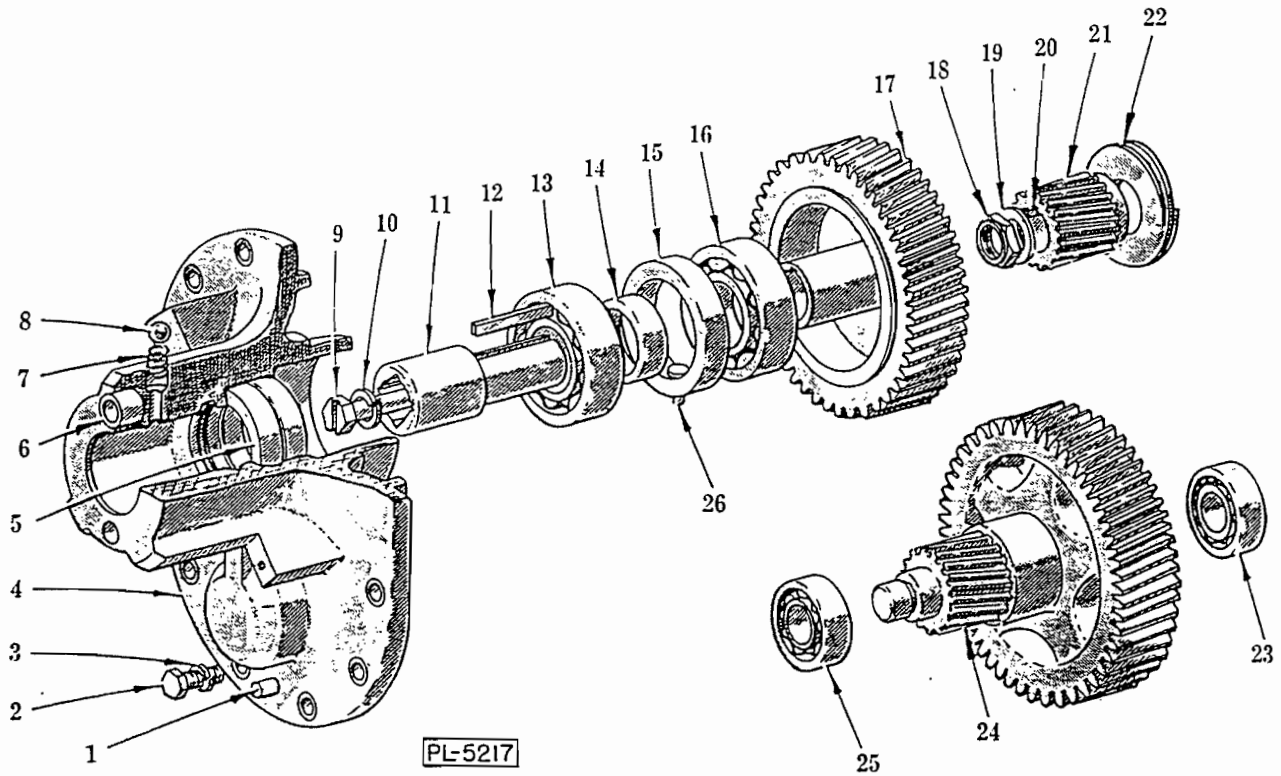
The chopping attachment should be oiled daily. For this purpose use only the highly-refined, tasteless oil that is contained in the small can supplied with each machine. A few drops each day in the oiler (G) will keep the attachment in good running order.



SWITCH, BASE AND HOUSING UNIT

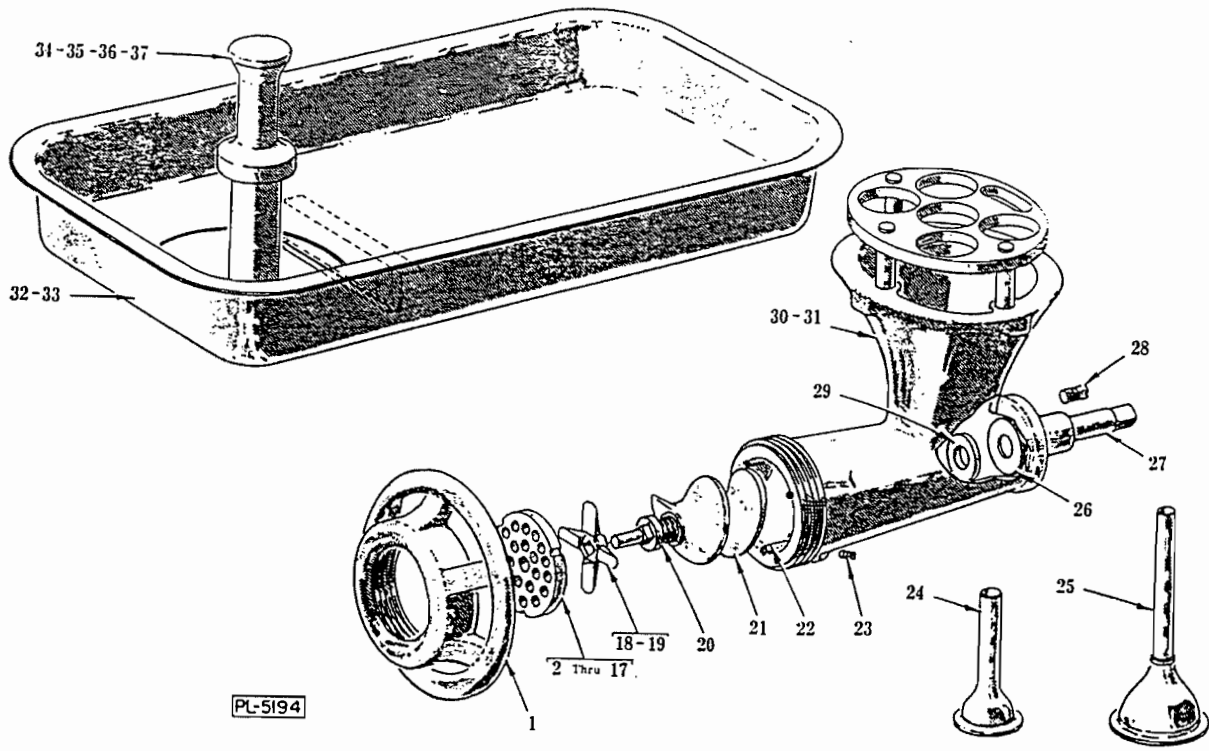
SWITCH, BASE AND HOUSING UNIT

ILLUS. PL-6697	PART NO.	NAME OF PART	AMT.
1	M-83681	Foot - Rubber -----	4
2	M-77772	Leg -----	4
3	M-77771	Stud - Leg -----	4
4	M-64814	Cap - Leg End -----	8
5	NS-17-59	Jam Nut - 1/2"-13 Hex Fin. -----	4
6	M-77770	Leg Sub-Assy. (Incls. items =2, 3, 4 & 5) -----	4
7	S-66029	Base Assy. -----	1
8	M-65482-1	Washer - Trim (Painted) -----	8
9	M-65482-2	Washer - Trim (SST) -----	8
10	SC-18-4	Mach. Screw - #10-24 x 1/2" Pan Hd. -----	8
11	P-85600	Plate - Mach. Data (Give Serial No. & Elec. Spec.) -----	1
12	SC-30-6	Mach. Screw - #6-32 x 3/8" Oval Hd. -----	2
13	SC-18-4	Mach. Screw - #10-24 x 1/2" Pan Hd. -----	11
14	S-64886-1	Front Sheet Assy. (Painted) -----	1
15	S-64886-2	Front Sheet Assy. (SST) -----	1
16	M-67515	Cover - Switch Opening -----	1
17	SC-30-6	Mach. Screw - #6-32 x 3/8" Oval Hd. -----	2
18	R-64959	Cap - Attach. Hub Trim -----	1
19	M-65319	Thumb Screw Assy. -----	1
20	SC-18-4	Mach. Screw - #10-24 x 1/2" Pan Hd. -----	4
21	RP-2-7	Rollpin - .187" Dia. x 1-1/8" Lg. -----	2
22	M-11881	Handle - Clamp -----	2
23	P-62234-2	Spring - Clamp -----	2
24	RP-2-35	Rollpin - .187" Dia. x 5/8" Lg. -----	2
25	SC-12-2	Mach. Screw - 5/16"-18 x 1-1/2" Fil. Hd. -----	2
26	WL-3-42	Lock Washer - 5/16" x .047" x .078" -----	2
27	P-65557	Bar - Spacing -----	1
28	M-65558	Strip - Compression -----	1
29	M-65424	Booster - Bumper -----	2
30	V-19105-2	Bumper -----	2
31	SC-60-38	Mach. Screw - #10-24 x 2" Rd. Hd. -----	2
32	-----	Motor (see separate Motor Parts Sheet) -----	1
33	T-64924	Motor Frame & Gear Case -----	1
34	S-69865-1	Housing Assy. (Painted) -----	1
35	S-69865-2	Housing Assy. (SST) -----	1
36	SD-8-20	Self-Tapping Screw - #8 x 1/4" Bind. Hd. Type "Z" -----	4
37	M-66258-1	Cover - Connection Opening (Painted) -----	1
38	M-66258-2	Cover - Connection Opening (SST) -----	1
39	M-67514	Plate - Switch (1 Ph. & 3 Ph.) -----	1
40	SC-30-6	Mach. Screw - #6-32 x 3/8" Oval Hd. -----	2
41	R-24940-4	Switch (1 Ph.) -----	1
42	R-24940-2	Switch (3 Ph. Under 250V) -----	1
43	SS-3-26	Switch (3 Ph. Above 250V) -----	1
44	M-74835	Screw - Switch Mounting -----	2
45	M-65295	Screen - Air Outlet -----	1
46	WS-2-51	Washer -----	4
47	SC-9-25	Mach. Screw - #10-24 x 5/8" Rd. Hd. -----	4
48	P-65621	Baffle - Air Outlet -----	2
48	P-65294	Screen - Air Inlet -----	1
50	SC-60-21	Mach. Screw - #10-24 x 1/4" Rd. Hd. -----	6
51	WS-2-51	Washer -----	6
52	SC-37-73	Fin. Bolt - 3/8"-16 x 1" Hex Hd. -----	2
53	WL-4-2	Lock Washer - 3/8" x .136" x .070" -----	2
54	P-66048	Booster - Gear Case (Air Outlet) -----	1
55	V-15250-1	Plug - 1/4" Pipe (Special) -----	1
56	P-11800-118	Dowel -----	2
57	SC-37-73	Fin. Bolt - 3/8"-16 x 1" Hex Hd. -----	8
58	WL-4-2	Lock Washer - 3/8" x .136" x .070" -----	8



ATTACHMENT HUB AND TRANSMISSION UNIT

ILLUS. PL-5217	PART NO.	NAME OF PART	AMT.
1	P-11800-116	Dowel -----	1
2	SC-37-75	Fin. Bolt - 5/16" - 18 x 3/4" Hex Hd. -----	12
3	WL-3-44	Lock Washer - 5/16" x .125" x .078" -----	12
4	P-65481	Attachment Hub Assy. (Incls. items #5 & 6) -----	1
5	M-23618	Seal - Grease -----	2
6	V-21223	Bushing - Stop Stud -----	1
7	M-65946	Spring - Oiler -----	1
8	BA-2-14	Ball - Oiler -----	1
9	SC-36-79	Fin. Bolt - 3/8"-24 x 2-3/4" Hex Slot. Hd. -----	1
10	WL-4-2	Lock Washer - 3/8" x .136" x .070" -----	1
11	P-15259	Sleeve - Sq. Drive -----	1
12	R-12430-68	Key -----	1
13	BB-6-38	Ball Bearing - N. D. #3207 -----	1
14	V-15261	Collar - Inner Spacing -----	1
15	M-15260	Collar - Outer Spacing -----	1
16	BB-6-38	Ball Bearing - N. D. #3207 -----	1
17	P-15772	Hub & Chopper Drive Gear Assy. (53T) -----	1
18	V-9435	Lock Nut -----	2
19	WS-11-1	Washer -----	1
20	R-12430-68	Key -----	1
21	M-15768	Pinion - Motor (19T) -----	1
22	M-15769	Deflector - Grease -----	1
23	BB-5-36	Ball Bearing - N. D. #3204 -----	1
24	P-65129	Main Drive Gear & Co-Shaft Pinion Assy. (64T & 18T) -----	1
25	BB-5-36	Ball Bearing - N. D. #3204 -----	1
26	V-15262	Pin - Spacer Retaining -----	1

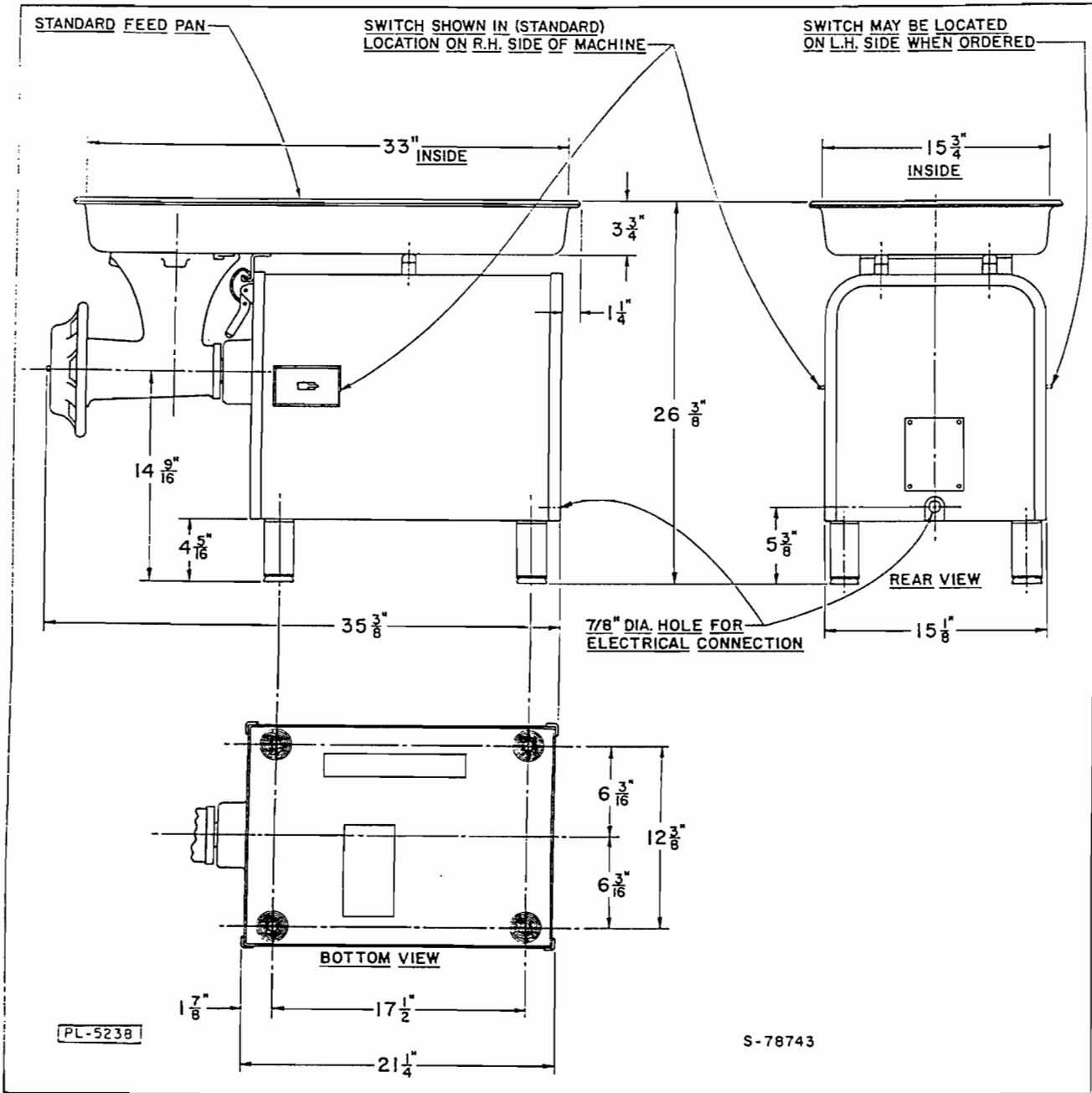


PL-5194

#32-FS CHOPPER ATTACHMENT UNIT (NSF)

Spec. #9363 & 9364

ILLUS. NO.	PART NO.	NAME OF PART	AMT.
1	R-77680	Ring - Adjusting (Hand Wheel Type) -----	1
2	M-16438	Chopper Plate - 1/8" Dia. Holes (Carbon Steel) -----	1
3	M-16439	Chopper Plate - 3/16" Dia. Holes (Carbon Steel) -----	1
4	M-16440	Chopper Plate - 1/4" Dia. Holes (Carbon Steel) -----	1
5	M-16441	Chopper Plate - 3/8" Dia. Holes (Carbon Steel) -----	1
6	M-16442	Chopper Plate - 1/2" Dia. Holes (Carbon Steel) -----	1
7	M-16443	Chopper Plate - 5/8" Dia. Holes (Carbon Steel) -----	1
8	M-16444	Chopper Plate - 3/4" Dia. Holes (Carbon Steel) -----	1
9	M-16445	Chopper Plate - 1" Dia. Holes (Carbon Steel) -----	1
10	P-17522-1	Chopper Plate - 1/8" Dia. Holes (Stay Sharp) -----	1
11	P-17522-2	Chopper Plate - 3/16" Dia. Holes (Stay Sharp) -----	1
12	P-17522-3	Chopper Plate - 1/4" Dia. Holes (Stay Sharp) -----	1
13	P-17522-4	Chopper Plate - 3/8" Dia. Holes (Stay Sharp) -----	1
14	P-17522-5	Chopper Plate - 1/2" Dia. Holes (Stay Sharp) -----	1
15	P-17522-6	Chopper Plate - 5/8" Dia. Holes (Stay Sharp) -----	1
16	P-17522-7	Chopper Plate - 3/4" Dia. Holes (Stay Sharp) -----	1
17	P-17522-8	Chopper Plate - 1" Dia. Holes (Stay Sharp) -----	1
18	P-15796	Chopper Knife (Carbon Steel) -----	1
19	P-60393	Chopper Knife (Stay Sharp) -----	1
20	P-17588	Stud - Plate -----	1
21	P-66023	Chopper Worm Assy. (Incls. items #20, 27 & 29) -----	1
22	V-14476	Pin - Plate -----	3
23	V-4313	Screw -----	3
24	M-5176	Stuffer - Sausage (Hog Casing) -----	1
25	P-5194	Stuffer - Sausage (Sheep Casing) -----	1
26	M-66026	Washer - Cylinder Thrust -----	1
27	M-11107	Stud - Sq. Drive -----	1
28	V-4035-1	Stud - Stop -----	1
29	M-66010	Washer - Worm Thrust -----	1
30	R-77722-1	Chopper Cylinder & Guard Assy. (Guard 1-3/4" high) (Incls. items #22, 23, 26 & 28) -----	1
31	R-77722-2	Chopper Cylinder & Guard Assy. (Guard 1-3/8" high) (Incls. items #22, 23, 26 & 28) -----	1
32	S-65387-1	Feed Pan Assy. (STL) -----	1
33	S-65387-2	Feed Pan Assy. (SST) -----	1
34	R-62341-1	Stomper (C. Alum.) (Use with item #30) -----	1
35	R-78925-8	Stomper (Plastic) (Use with item #30) -----	1
36	R-62341-5	Stomper (C. Alum.) (Use with item #31) -----	1
37	R-78925-6	Stomper (Plastic) (Use with item #31) -----	1



INSTALLATION DIAGRAM