



# BEVERAGE-AIR

3779 Champion Blvd., Winston-Salem, NC 27105  
1-888-845-9800 Fax# 1-336-245-6453  
<http://www.Beverage-Air.com>

## Commercial Refrigeration Equipment General Specification

### TWO DOOR BOTTOM MOUNT—GLASS DOOR MERCHANDISER

Double section glass door merchandiser with lighted sign panel used for merchandising and storage of frozen food, frozen novelty items and cold product.

#### CABINET CONSTRUCTION

Heavy duty construction includes white coated steel interior and exterior. Choose from black or white exterior finish.

Foamed-in-place CFC and HCFC-free polyurethane insulation enhances the structural strength of the cabinet and helps increase energy efficiency.

Triple pane tempered glass doors on refrigerator models. Heated hinged triple pane tempered glass doors on freezer models. Magnetic door gaskets provide positive seal. Door provides automatic hold-open feature.

Three white epoxy coated steel shelves per door section are standard.

Brightly lighted sign panel.

#### REFRIGERATION

Self-contained bottom mount refrigeration system. Expansion valve refrigerant control on freezer provides quick temperature pull down and reduces compressor run time—meaning reduced energy consumption. Includes automatic condensate disposal. Refrigerators utilize ozone friendly R134a refrigerant. Freezers utilize ozone friendly R404A refrigerant and feature automatic defrost.

Freezer product temperatures from  $-15^{\circ}\text{F}$  to  $-5^{\circ}\text{F}$ .  
Refrigerator product temperatures from  $36^{\circ}\text{F}$  to  $38^{\circ}\text{F}$ .

#### ELECTRICAL

Vertical interior lighting enhances product presentation.

Refrigerators are 115/60/1 with 3-wire plug.  
Freezers are 208-230 volt/60/1 with 4-wire cord and plug.  
8' long cord and plug set included.

Item No. \_\_\_\_\_  
Quantity \_\_\_\_\_

### TWO DOOR BOTTOM MOUNT GLASS DOOR MERCHANDISERS REFRIGERATORS AND FREEZERS

MODELS:  
CFG48Y  
CRG48



CRG48



CFG48Y

#### SPECIAL FEATURES

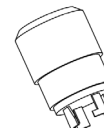
- Vertical interior lighting
- Lighted sign panel

#### ELECTRICAL CONNECTION



115/60/1  
NEMA-5-15P

3-wire plug



4-wire plug  
NEMA L14-20P

Available From:



\*Note: Not all markings may apply to all model variations.

Model Specified \_\_\_\_\_

Store# \_\_\_\_\_

Location \_\_\_\_\_

Quantity \_\_\_\_\_



**BEVERAGE-AIR**

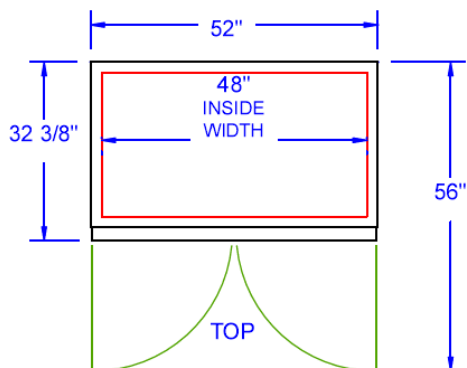
## Two Door, Bottom Mount Glass Door Merchandisers

Models: CFG48Y, CRG48

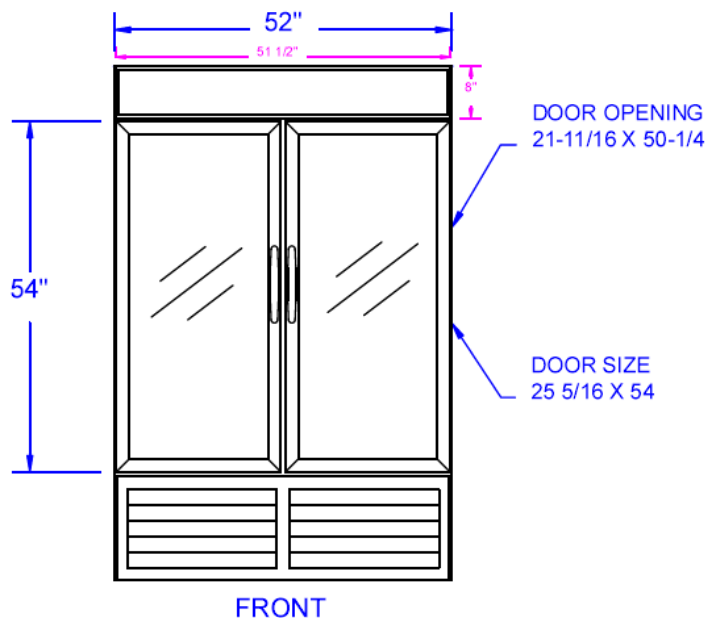
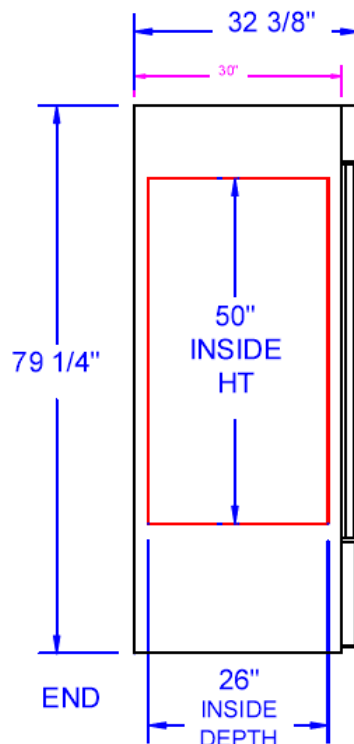
MODEL	CFG48Y FREEZER	CRG48 REFRIGERATOR
<b>EXTERNAL DIMENSIONAL DATA</b>		
Length Overall (inches)	52"	52"
Length Overall (mm)	1321	1321
Depth Overall (inches)	32 3/8"	32 3/8"
Depth Overall (mm)	822	822
Height Overall— (inches)	79 1/4"	79 1/4"
Height Overall— (mm)	2013	2013
Number of doors	2	2
Depth with Door Open 90 °	56"	56"
<b>INTERNAL DIMENSIONAL DATA</b>		
NET Capacity (cubic ft.)	44.9	44.9
NET Capacity (Liters)	1271	1271
Internal Length Overall (inches)	48"	48"
Internal Length Overall (mm)	1219	1219
Internal Depth Overall (inches)	26"	26"
Internal Depth Overall (mm)	660	660
Internal Height Overall—(inches)	50"	50"
Internal Height Overall—(mm)	1270	1270
Number of shelves	6	6
<b>ELECTRICAL DATA</b>		
Voltage	208-230/1/60	115/60/1
Full Load Amperes 115/60/1	11.4	9.4
<b>ENERGY CONSUMPTION (KWH)</b>	28.8	10.54
<b>REFRIGERATION DATA</b>		
Horsepower	1	1/3
<b>WEIGHT DATA</b>		
Gross Weight (Crated lbs)	714	622
Gross Weight (Crated kg)	324	282



Note: Not all markings may apply to all model variations.



### PLAN VIEWS



## BEVERAGE-AIR® CORPORATION

3779 Champion Blvd. • Winston-Salem, NC 27105 USA • (336) 245-6400 • Fax (336) 245-6453 • (888) 845-9800 • [www.beverage-air.com](http://www.beverage-air.com)

Specifications are subject to change without prior notice. 06/10