



# Autobroil™

## Model 77BG

### Straight Through Gas Countertop Broiler

Item No: _____
AIA FILE NO. / SPEC NO. _____
CONSULTANT/ CONTRACTOR APPROVAL _____



Model 77BG

The Marshall **Model 77BG** gas broiler is designed for high production. Products cook directly on the heavy-duty conveyor rods for even cooking and the highly desirable grilling bar marks.

The 77BG is equipped with a computer and (2) 7" belts for menu items that require different cook times. Different weight hamburgers and chicken filets cook directly on two individually controlled conveyors. Each conveyor has four product buttons to program various cook times.

All Marshall products are supported by a nationwide service organization and an in-house, full-time Customer Support Department. To place an order, call:

**1-800-627-8368**

**ETL (US, Canada) & NSF Listed  
FOR COMMERCIAL USE ONLY**

*\*Ask about Marshall's ThermoGlo™ Food Warmers, companion High Speed Toasters, and Ventilation Systems*

**High production gas broiler for hamburgers of different sizes and other food items such as chicken and meat filets. Food items lay directly on conveyor, producing appealing bar marks.**

#### FEATURES

- Straight through cooking arrangement – Fully automatic
- Compact and versatile size - Fits on countertop
- Electronic ignition system – Simply use the on/off switch
- Self-calibrating computer speed & temperature control with diagnostics
- Individual plug-in motors for speed control of each broiler belt
- Two position catch tray assembly

#### CONSTRUCTION

- Heavy gauge stainless steel solid weld frame construction
- 3/16" diameter, heavy-duty stainless steel conveyor rods
- Stainless steel internal gas lines (gas models)
- Simple conveyor tension adjustment
- Easy to operate computer control panel
- Heavy duty industrial grade heating elements or gas burners

#### VOLUME

Peak Production:	3 Minute	4 Minute
	<u>Cook Time</u>	<u>CookTime</u>
5" Long chicken breast	394	296
6" Long chicken breast	328	246
4" Beef patties	246	184
5" Beef patties	196	146

*(Figures for estimating only. Actual production varies with fat content, surface texture and meat starting temperature.)*

#### Marshall Air Systems, Inc.

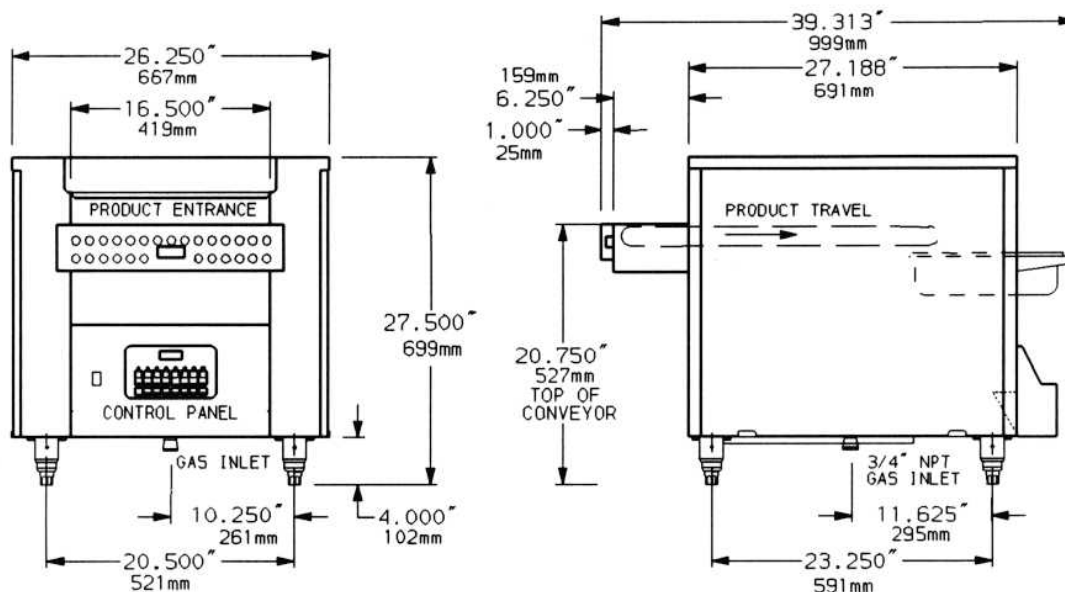
419 Peachtree Drive South • Charlotte, North Carolina 28217 USA • Phone: (704) 525-6230 Fax: (704) 525-6229 • [www.marshallair.com](http://www.marshallair.com)



# Autobroil™

## Model 77BG

### Straight-Through Gas Countertop Broiler



#### Overall Dimensions

Dimensions:	Height: 27.500" 699mm	Width: 26.250" 667mm	Depth: 39.313" 973mm	
Shipping Information:	Weight: Net 250 lbs. 114 kilos	Ship Wt: 295 lbs. 134 kilos	NMFC Freight (USA) Class 85	Ship. Cubes: 35.3 cubic ft. 1.0 cubic meters
Electrical: Wiring:	120V/60HZ/1 ph 2 amps/ 0.24 kw 8 Ft long cord. Plug-in. Standard wall receptacle			
Gas Supply:	Liquid propane 63,000 BTUH		or Natural gas 63,000 BTUH	
Options:	Companion Ventilation System Heavy-duty stainless steel stand with casters Complete spare parts supply kit 36" or 72" flexible gas line with quick disconnect and restraining device Top extension			

#### Marshall Air Systems, Inc.

419 Peachtree Drive South • Charlotte, North Carolina 28217 USA • Phone: (704) 525-6230 Fax: (704) 525-6229 • [www.marshallair.com](http://www.marshallair.com)