



Variety Slicer

SPECIFICATIONS:

Motor:

1/2 H.P., single phase, 60Hz, 115 VAC, 7 AMPS.
Special electrics also available

Capacities:

16" (406mm) long X 10 1/2" (267mm) wide X 3 1/2" (90mm) high to 6" (152mm) high

Slice Spacing (thickness):

Standard: 3/8" (10mm), 7/16" (11mm), 1/2" (13mm)
Also available (at extra cost): 1/4" (6.3 mm) 5/16" (8mm), 9/16" (14mm), 5/8" (16mm), 3/4" (19mm), 7/8" (22mm) or 1" (25mm), 1.5" (38mm)

Lubrication:

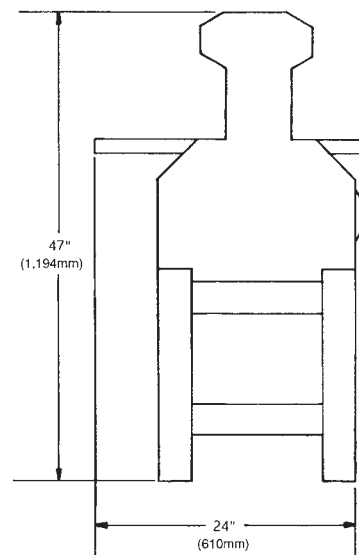
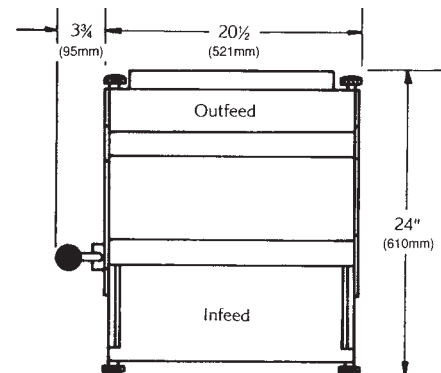
Sealed and grease-packed ball bearings contribute to smooth, quiet operation

Finish:

Durable white powder coat finish to resist rust and corrosion

Dimensions:

	Floor Model	Countertop Model
Shipping Weight:	300 lbs. (135kg)	260 lbs. (117kg)
Net Weight:	250 lbs. (113kg)	240 lbs. (109kg)
Width:	24" (610mm)	24 1/4" (616mm)
Depth:	24" (610mm)	24" (610mm)
Height	47" (1194mm)	26.5" (67.mm)



The information contained herein is correct to the best of our knowledge. The recommendations or suggestions are made without guarantee or representation as to results.

Above specifications subject to change without notice.

Manufactured in the U.S.A.

