



Manufacturer and Supplier of
Restaurant Equipment
 and **Display Cases**
 for the Food Service Industry

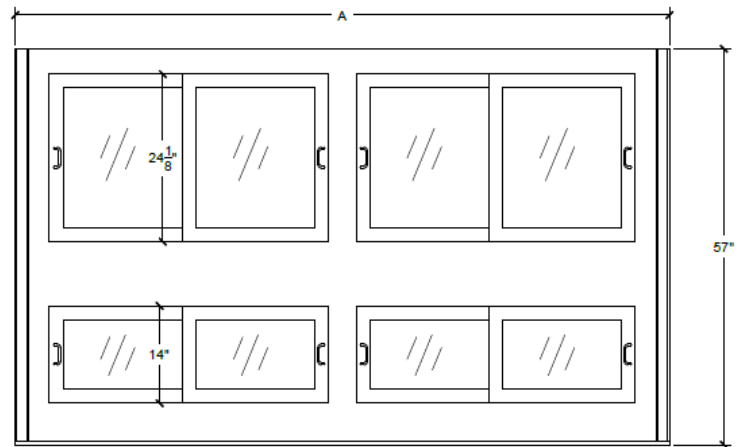
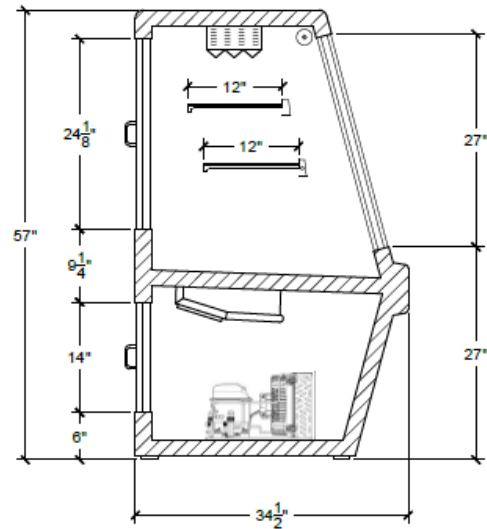


MODEL: DLC-10-SC

PRODUCT FEATURES

- Double Duty Deli Case
- (3) levels of display
- Stainless Steel exterior
- Stainless Steel interior bottom
- 8 rear access doors
- Florescent Lights under every shelf
- Slanted Glass to minimize ambient light reflection
- Holds 33°-41°F temperatures
- Self-contained unit
- Compressor can be serviced easily
- Environmentally friendly 134A refrigerant
- 3/4 HP, 115V, 18.4 Amps

Casters	NA
Warranty	1 yr Parts
Front	Glass
Front Motor Cover	NA
Interior Walls	White Aluminum
Exterior	Stainless steel



Product Specifications

Dimensions	Doors	Shelves	Cooling Cycle	Refrigerant	HP	Power	Ampr.	BTU	Freon (oz)
118" X 33" X 57"	8	2	33-41	134a	3/4	115/60/1	18.4	NA	21

Additional Models

Model #	Doors	Shelves	Cooling Cycle	Refrigerant	HP	Power	Ampr.	BTU	Freon (oz)
DLC-4-SC	3	2	33-41	134a	1/3	115/60/1	8.9	NA	17
DLC-6-SC	6	2	33-41	134a	1/2	115/60/1	10.3	NA	17
DLC-8-SC	8	2	33-41	134a	1/2	115/60/1	13.4	NA	21

* Model number designates product length. Due to product improvement, we reserve the right to change specifications without notice.