

Fresh Mix Dispenser with 3 Hoppers

ITEM#

PROJECT

DATE

Features

Fresh Mix Dispenser

- Variable speed motors allow control of product consistency in mixing chamber (.75 to 6.6 grams of powder per second).
- Lighted front graphics for merchandising are easy to exchange: cappuccino or soup.
- Attractive high-impact resin door is dent and scratch resistant. Black finish or stainless with black door.
- Large easy-to-fill translucent hoppers hold 4 lbs. (1.81 Kg) of product each, ensuring quick and timely refilling.
- High speed heavy-duty whipper for complete product mixing.
- Improved automatic rinsing of whipper reduces run-on after beverage is dispensed.
- Adjustable legs and drip tray accommodate 20 oz. (.59 liter) mugs easily.
- Electrical and plumbing components easily accessible through front and top.
- International electrical configurations available.



Model FMD-3*

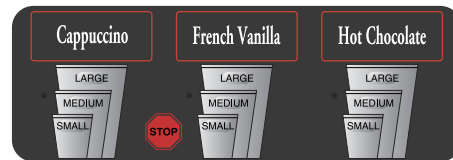
Dimensions: 30"H x 11.3"W x 23.3"D
(76.2 cm H x 28.7 cm W x 59.2 cm D)

FMD DBC Dispenser

- Easy-to-program, one-touch portion control for 3 cup sizes.
- Fast fill perfect for quick service restaurants.
- Each mixing chamber has independent powder to water ratio.
- System setup is password protected for safety.
- Simple setup and hopper throw calibration system.



FMD-3
front display panel



Model FMD DBC-3*

Dimensions: 30"H x 11.3"W x 23.3"D
(76.2 cm H x 28.7 cm W x 59.2 cm D)

For current specification sheets and other information, go to www.bunn.com.

* International models may vary in appearance.

Model	Agency Listing	International Model	Agency Listing
FMD-3	NSF, UL	FMDA-DBC-3	CE
FMD-3	NSF, UL		
FMD DBC-3			

Dimensions & Specifications

Model	Product #	Volts	Amps	Tank Heater Watts	Total Watts	Capacity	Cu. Ft.	Shipping Weight	Cord Attached
FMD-3 BLK	SET00.0197	120	15	1700	1800	4.2 gal./hr.**	8.1	86 lbs. (39.0 kg)	Yes*
FMD-3 SS	SET00.0198	120	15	1700	1800	4.2 gal./hr.**	8.1	86 lbs. (39.0 kg)	Yes*
FMD-3 BLK†	28600.0000	120	15	1700	1800	4.2 gal./hr.**	8.1	84 lbs. (38.1 kg)	Yes*
FMD DBC-3 BLK	29250.0000	120	15	1700	1800	4.2 gal./hr.**	8.1	85 lbs. (38.6 kg)	Yes*

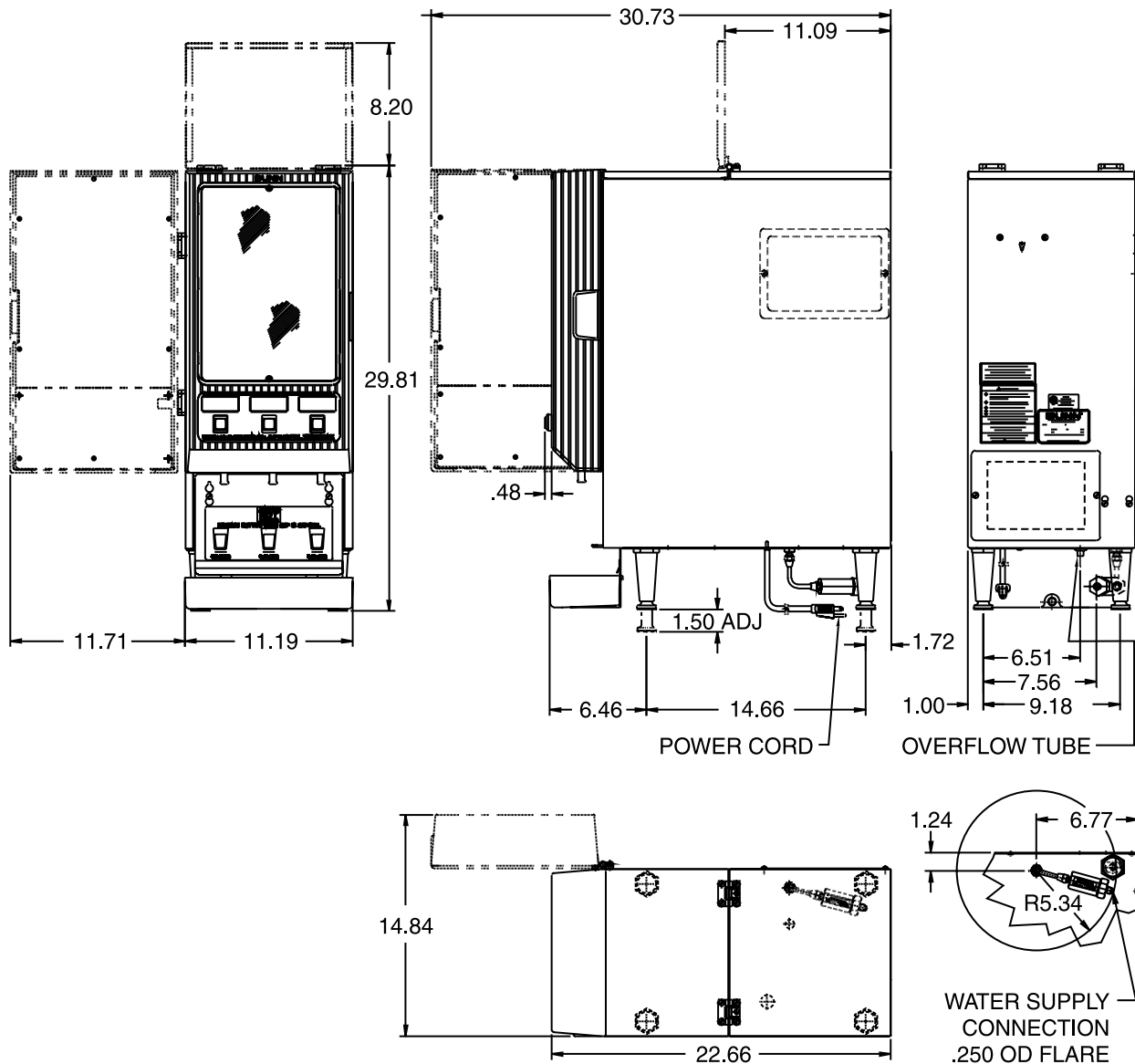
*Model has soup dispense tips and graphic. *Power cord (NEMA 5-15P) 15 Amp-120V machine only. **Based on incoming water temperature of 50°F.

Door Conversion Kit—From model HC (black decor only) to model FMD door - 28613.0000

Note: SS=stainless steel cabinet with black door, BLK=black decor.

Electrical: 120V model requires 2-wires plus ground service rated 120V, single phase, 60 hz. 120/240V model requires 3-wires plus ground service rated 120/208 or 120/240V, single phase, 60Hz.

Plumbing: 20-90 psi (138-621 kPa) from a 3/8" (10 mm) or larger supply line. A shut-off valve should be installed in the line before the unit. Install a regulator in line when pressure is greater than 90 psi to reduce it to 50 psi. Supplied with 1/4" (6.4 mm) male flare fitting.



BUNN Corporation - 1400 Stevenson Drive Springfield, Illinois 62703 • 800-637-8606 • 217-529-6601 • Fax 217-529-6644 • www.bunn.com

BUNN® practices continuous product research and improvement. We reserve the right to change specifications and product design without notice. Such revisions do not entitle the buyer to corresponding changes, improvements, additions or replacements for previously purchased equipment.

All dimensions shown in inches. Bunn Corporation owns all copyrights relating to materials in this publication. Please contact Bunn Corporation to request permission to reproduce any portion of this publication.